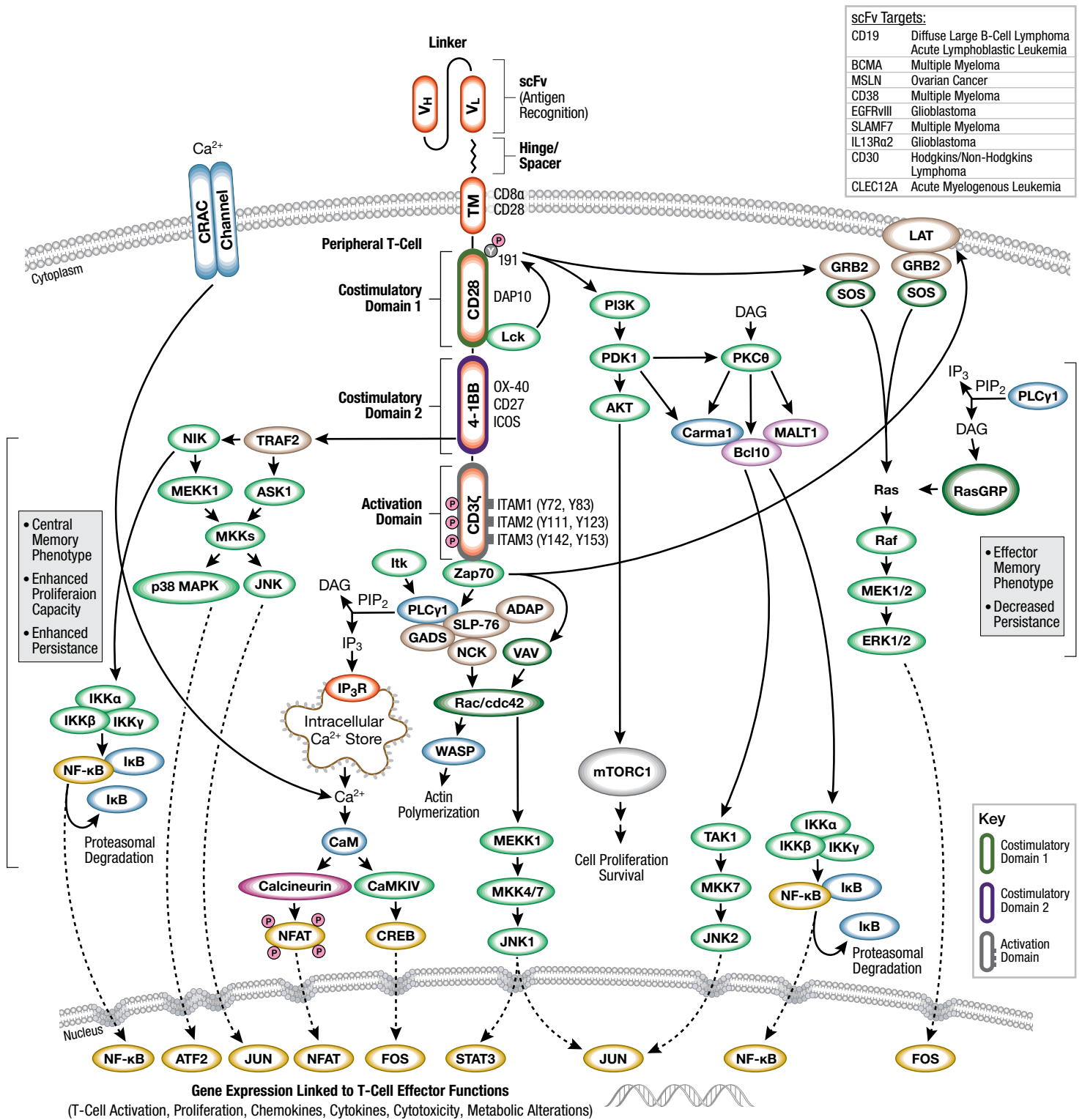


# CAR Signaling Networks



For pathway key and background, please visit:  
[www.cst-science.com/pathway](http://www.cst-science.com/pathway)

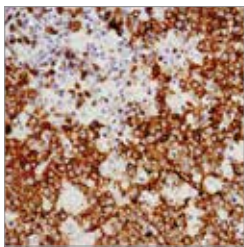
## Key Products for CAR Signaling Networks

Visit [www.cellsignal.com](http://www.cellsignal.com) for a full listing of antibodies, related kits, and reagents.

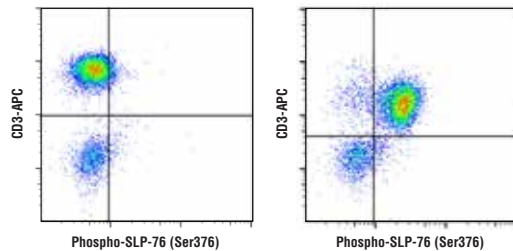
PRODUCTS	APPLICATIONS	REACTIVITY
<b>19541</b> 4-1BB/CD137/TNFRSF9 (E6Z7F) XP <sup>®</sup> Rabbit mAb	WB, IHC-Bond, IHC-P	H
<b>34594</b> 4-1BB/CD137/TNFRSF9 (D2Z4Y) Rabbit mAb	WB, IP, IHC-P, IF-IC, F	H
<b>4691</b> Akt (pan) (C67E7) Rabbit mAb	WB, IP, IHC-P, IF-IC, F	H, M, R, Mk, Dm, (Pg)
<b>4060</b> Phospho-Akt (Ser473) (D9E) XP <sup>®</sup> Rabbit mAb	WB, IP, IHC-P, IF-IC, F	H, M, R, Hm, Mk, Dm, Z, B, (C, X, Dg, Pg)
<b>12716</b> Phospho-CaMKII (Thr286) (D21E4) Rabbit mAb	WB	H, M, R
<b>85061</b> CD3e (D7A6E <sup>™</sup> ) XP <sup>®</sup> Rabbit mAb	WB, IP, IHC-P	H
<b>90176</b> CD19 (D4V4B) XP <sup>®</sup> Rabbit mAb	WB, IP, IHC-Bond, IHC-P	H, M, (B)
<b>38774</b> CD28 (D2Z4E) Rabbit mAb	WB, IP	H, M
<b>51000</b> CD38 (E7Z8C) XP <sup>®</sup> Rabbit mAb	WB, IHC-Bond, IHC-P	H
<b>98611</b> CRACC/SLAMF7/CD319 (E5C4M) Rabbit mAb	WB, IHC-Bond, IHC-P	H
<b>4820</b> CREB (D76D11) Rabbit mAb	WB, IP, IF-F, IF-IC, F, ChIP	H, M, R, Hm, Mk, Dm
<b>9198</b> Phospho-CREB (Ser133) (87G3) Rabbit mAb	WB, IHC-P, IF-F, IF-IC, F, ChIP, ChIP-seq	H, M, R, (Z)
<b>71804</b> DLL3 (E3J5R) Rabbit mAb	WB, IP, IHC-P	H
<b>64952</b> EGF Receptor vIII (D6T2Q) XP <sup>®</sup> Rabbit mAb	IHC-P, IF-IC	H
<b>46890</b> Granzyme B (D6E9W) Rabbit mAb	WB, IHC-Bond, IHC-P	H, M
<b>4290</b> HER2/Erbb2 (D8F12) XP <sup>®</sup> Rabbit mAb	WB, IHC-P	H, M, (R)
<b>89601</b> ICOS (DIK2T <sup>™</sup> ) Rabbit mAb (IHC Specific)	IHC-Bond, IHC-P	H
<b>8455</b> IFN- $\gamma$ (D3H2) XP <sup>®</sup> Rabbit mAb	WB, IP, IF-IC, F	H
<b>8943</b> IKK $\beta$ (D30C6) Rabbit mAb	WB, IP	H, M, R, Mk
<b>2697</b> Phospho-IKK $\alpha/\beta$ (Ser176/180) (16A6) Rabbit mAb	WB, IHC-P, IHC-F, F	H, M, R, Mk, (B)
<b>13517</b> IL-2R $\alpha$ /CD25 (D6K5F) Rabbit mAb	WB	H
<b>85677</b> IL-13RA2/CD213a2 (E7U7B) Rabbit mAb	WB, IP, IHC-P, F	H
<b>15372</b> LAG3 (D2G4O <sup>™</sup> ) XP <sup>®</sup> Rabbit mAb	WB, IHC-Bond, IHC-P	H
<b>45533</b> LAT (E3U6J) XP <sup>®</sup> Rabbit mAb	WB, IP, IHC-P	H, M
<b>2984</b> Lck (D88) XP <sup>®</sup> Rabbit mAb	WB, IHC-P	H
<b>2787</b> Lck (73A5) Rabbit mAb	WB, IF-IC, F	H
<b>8727</b> MEK1/2 (D1A5) Rabbit mAb	WB, IF-IC, F	H, M, R, Mk, Dm, (Hm, X, Z, B, Dg, Pg, Ce)

PRODUCTS	APPLICATIONS	REACTIVITY
<b>9154</b> Phospho-MEK1/2 (Ser217/221) (41G9) Rabbit mAb	WB, IP	H, M, R, Mk, (C)
<b>99966</b> Mesothelin (D9R5G) XP <sup>®</sup> Rabbit mAb	WB, IHC-P	H
<b>5861</b> NFAT1 (D43B1) XP <sup>®</sup> Rabbit mAb	WB, IP, IHC-P, IF-IC, F	H, M
<b>8242</b> NF- $\kappa$ B p65 (D14E12) XP <sup>®</sup> Rabbit mAb	WB, IP, IHC-P, IF-IC, F, ChIP, ChIP-seq	H, M, R, Hm, Mk, Dg
<b>3033</b> Phospho-NF- $\kappa$ B p65 (Ser536) (93H1) Rabbit mAb	WB, IP, IF-IC, F	H, M, R, Hm, Mk, Pg, (Dg)
<b>61637</b> OX40 (E9U7O) XP <sup>®</sup> Rabbit mAb	WB, IP, IHC-Bond, IHC-P	H, M, R
<b>15123</b> OX40 (D1S6L) Rabbit mAb	WB, IP, IF-IC, F	H
<b>4695</b> p44/42 MAPK (Erk1/2) (137F5) Rabbit mAb	WB, IP, IHC-P, IF-IC, F	H, M, R, Hm, Mk, Mi, Dm, Z, B, Dg, Pg, Ce, (C)
<b>4370</b> Phospho-p44/42 MAPK (Erk1/2) (Thr202/Tyr204) (D1314.4E) XP <sup>®</sup> Rabbit mAb	WB, IP, IHC-P, IF-IC, F	H, M, R, Hm, Mk, Mi, Dm, Z, B, Dg, Pg, Sc, (C, Ce)
<b>86163</b> PD-1 (D4W2J) XP <sup>®</sup> Rabbit mAb	WB, IP, IHC-Bond, IHC-P, F	H
<b>3438</b> Phospho-PDK1 (Ser241) (C49H2) Rabbit mAb	WB, IP	H, M, R
<b>14008</b> Phospho-PLC $\gamma$ 1 (Tyr783) (D6M9S) Rabbit mAb	WB, IP, F	H, M, (R, X, B, Dg)
<b>3339</b> Ras (27H5) Rabbit mAb	WB	H, M, R, Mk, Dm
<b>4668</b> Phospho-SAPK/JNK (Thr183/Tyr185) (81E11) Rabbit mAb	WB, IHC-P	H, M, R, Dm, Sc
<b>70896</b> SLP-76 (D1R1A) Rabbit mAb	WB, IP, IHC-P, IF-IC, F	H
<b>92711</b> Phospho-SLP-76 (Ser376) (D7S1K) XP <sup>®</sup> Rabbit mAb	WB, F	H
<b>9145</b> Phospho-Stat3 (Tyr705) (D3A7) XP <sup>®</sup> Rabbit mAb	WB, IP, IHC-P, IHC-F, IF-IC, F, ChIP, ChIP-seq	H, M, R, Mk, (Hm, B, Pg, Hr)
<b>4508</b> Phospho-TAK1 (Thr184/187) (90C7) Rabbit mAb	WB	H, (M, R, C, X, Z, B)
<b>45208</b> TIM-3 (D5D5R <sup>™</sup> ) XP <sup>®</sup> Rabbit mAb	WB, IP, IHC-Bond, IHC-P, F	H
<b>8184</b> TNF- $\alpha$ (D1G2) Rabbit mAb (IF/Flow Preferred)	WB, IP, IF-IC, F	H
<b>88183</b> TNFRSF17/BCMA (E6D7B) Rabbit mAb	WB, IP, IHC-P, F	H
<b>54535</b> TNFRSF8/CD30 (E4L4I) XP <sup>®</sup> Rabbit mAb	WB, IP, IHC-P	H, M
<b>13908</b> Phospho-TRAF2 (Ser1) (E2B6L) Rabbit mAb	WB	H, M
<b>3165</b> Zap-70 (D1C10E) XP <sup>®</sup> Rabbit mAb	WB, IP, IF-IC, F	H, M
<b>2705</b> Zap-70 (99F2) Rabbit mAb	WB, IP, IHC-P, F	H, M
<b>2717</b> Phospho-Zap-70 (Tyr319)/Syk (Tyr352) (65E4) Rabbit mAb	WB, IF-IC, F	H, M, (R, Hm, C, B, Dg, Pg, Hr)

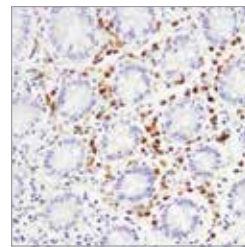
For Research Use Only. Not For Use In Diagnostic Procedures. 19-IMM-52062-PWH-MAY22



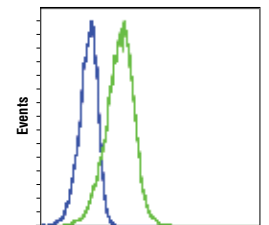
**CD19 (D4V4B) XP<sup>®</sup> Rabbit mAb #90176:** IHC analysis of paraffin-embedded human lymphoma using #90176.



**Phospho-SLP-76 (Ser376) (D7S1K) XP<sup>®</sup> Rabbit mAb #92711:** Flow cytometric analysis of human peripheral blood mononuclear cells, untreated (left) or treated with cross-linked anti-CD3 plus anti-CD28 (10  $\mu$ g/ml each, 15 min; right), using #92711, and co-stained with a CD3 antibody. Anti-rabbit IgG (H+L), F(ab'), Fragment (Alexa Fluor<sup>®</sup> 488 Conjugate) #4412 was used as a secondary.



**TNFRSF17/BCMA (E6D7B) Rabbit mAb #88183:** IHC analysis of paraffin-embedded human normal colon using #88183.



**Phospho-Zap-70 (Tyr319)/Syk (Tyr352) (65E4) Rabbit mAb #2717:** Flow cytometric analysis of Ramos cells, untreated (blue) or treated with anti-IgM (green), using #2717. Anti-rabbit IgG (H+L), F(ab'), Fragment (PE Conjugate) #8885 was used as a secondary antibody.

© 2022 Cell Signaling Technology, Inc. Cell Signaling Technology, CST, and XP are trademarks of Cell Signaling Technology, Inc. All other trademarks are the property of their respective owners. Visit [cellsignal.com/trademarks](http://cellsignal.com/trademarks) for more information.

For pathway key and background, please visit:  
[www.cst-science.com/pathway](http://www.cst-science.com/pathway)

